

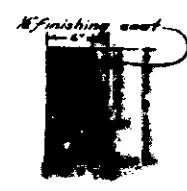
8
 36.00
 72.00
 658.00
 1.92

LEGEND

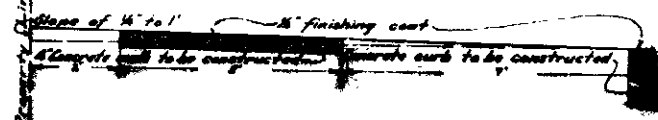
"or" in means inch or inches
 "ft" means feet or feet
 "No" means number
 "Elev." means elevation
 "St." means street
 Concrete walk to be constructed shown thus
 Concrete curb to be constructed shown thus
 Concrete paving to be constructed shown thus
 Sub. means subdivision.

PLAN No 635
FOR THE IMPROVEMENT
B STREET

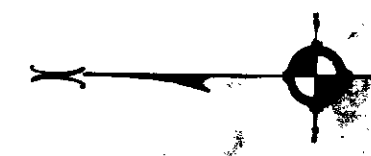
CITY OF SAN BERNARDINE
 February - 1936.



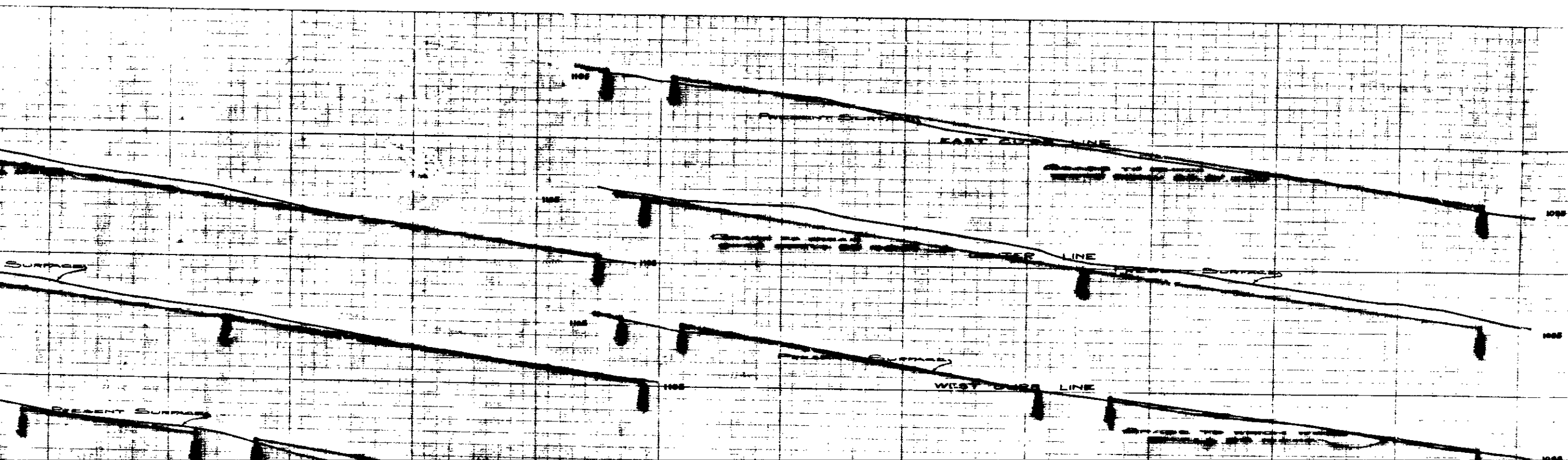
DETAIL OF CURB
 Scale - 1/4"



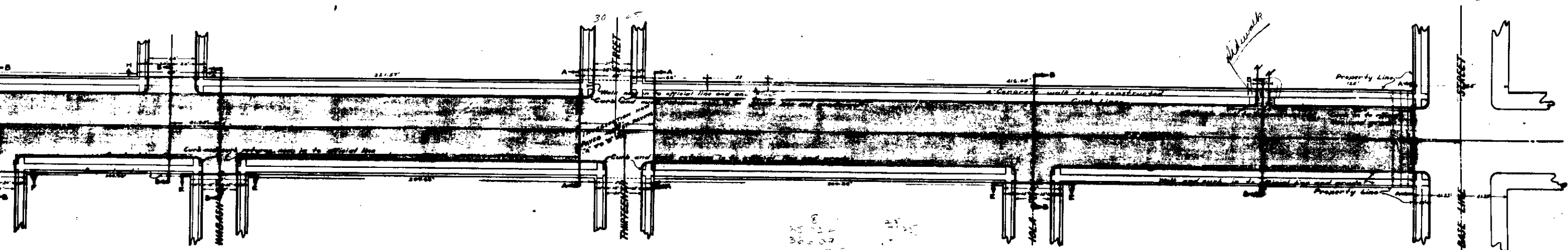
CROSS-SECTION OF WALK AND CURB
 Scale - 1"



DETAIL OF CURB
 Scale - 1/4"



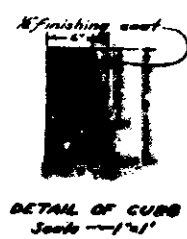
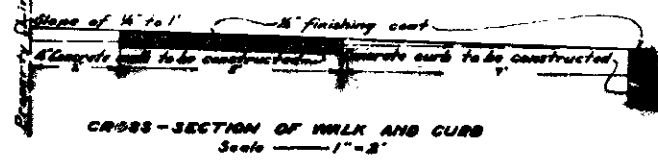
All elevations are in feet and above a mean which is 1045.28' below the City Bench mark as established by Ordinance No. 582 of the City of San Bernardino, California.
 All established or calculated elevations are shown in red ink.



8
 36.00
 72.00
 658.00
 1.92

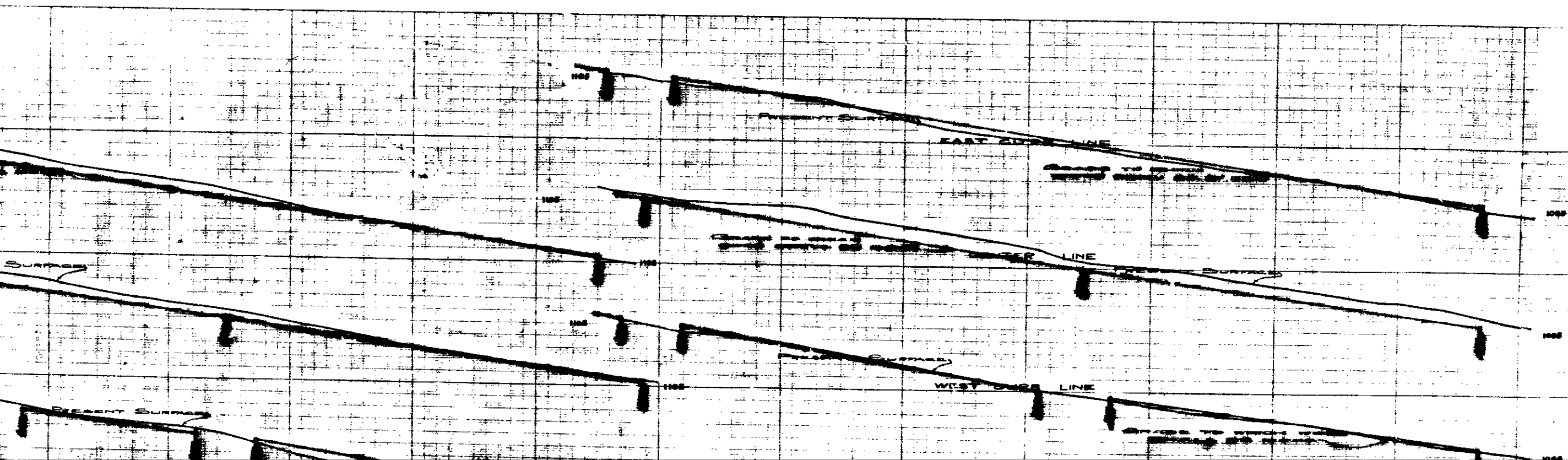
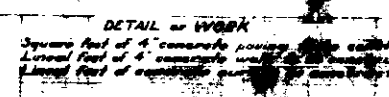
LEGEND

"or" in means inch or inches
 "ft" means feet or feet
 "No" means number
 "Elev." means elevation
 "St." means street
 Concrete walk to be constructed shown thus
 Concrete curb to be constructed shown thus
 Concrete paving to be constructed shown thus
 Sub. means subdivision.



PLAN No 635
 FOR THE IMPROVEMENT
B STREET

CITY OF SAN BERNARDINE
 February - 1936
 Scale — 1" = 40'



All elevations are in feet and above a point which is 1045.28' below the City Bench mark as established by Ordinance No. 582 of the City of San Bernardino, California.
 All established or calculated elevations are shown in red ink.